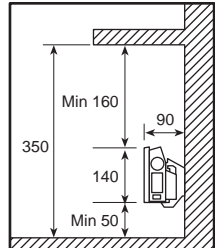
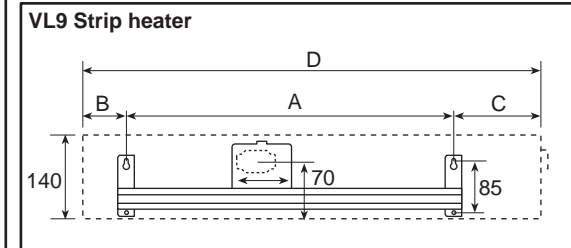
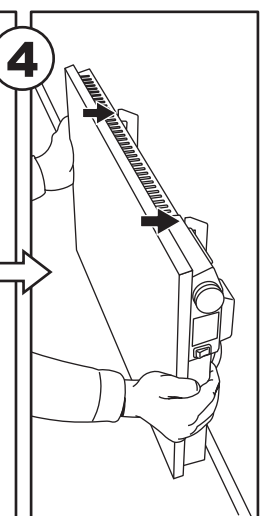
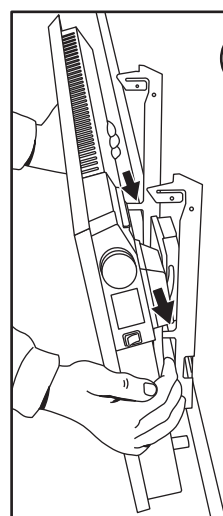
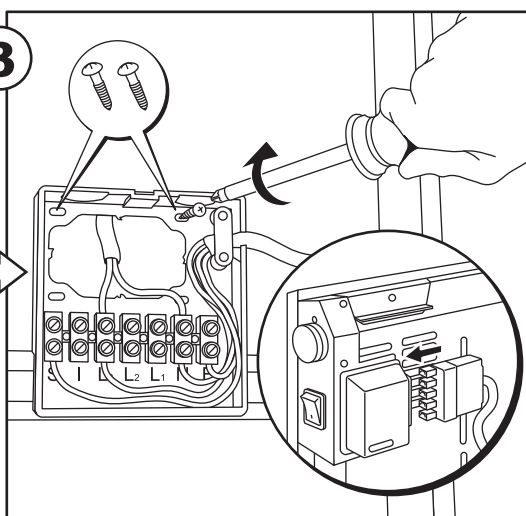
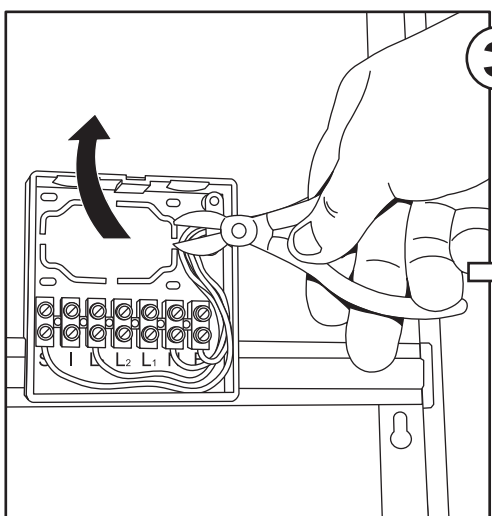
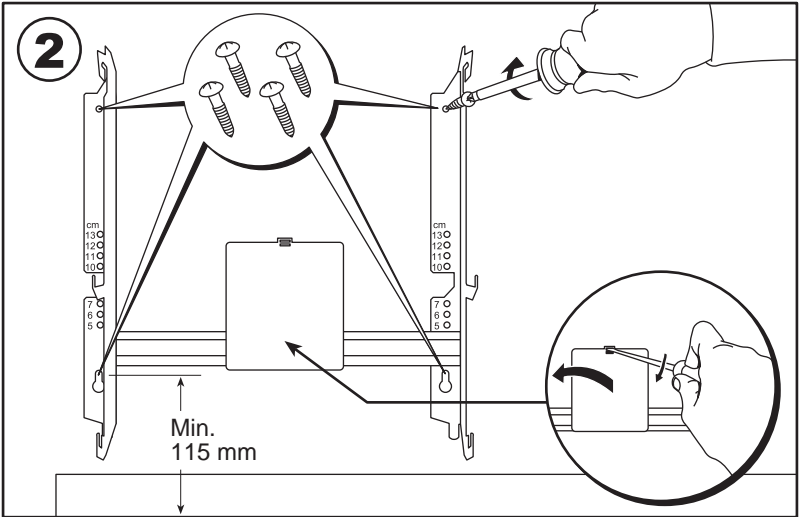
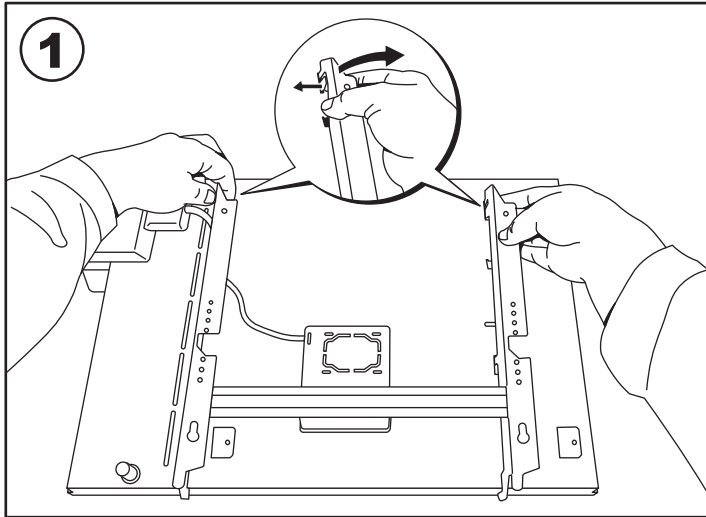


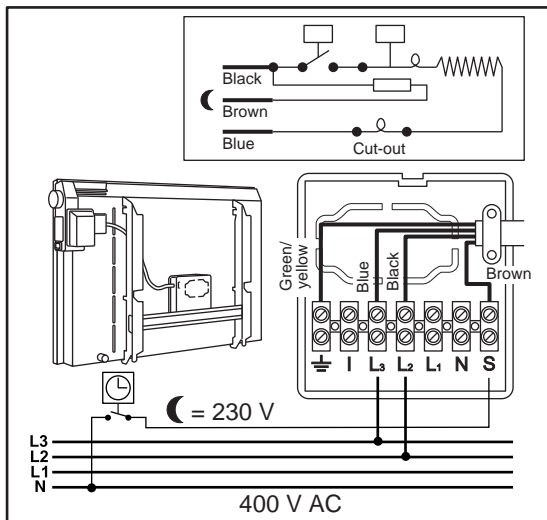
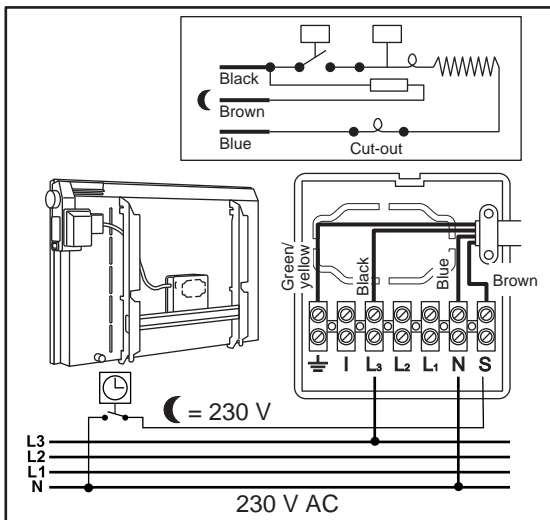
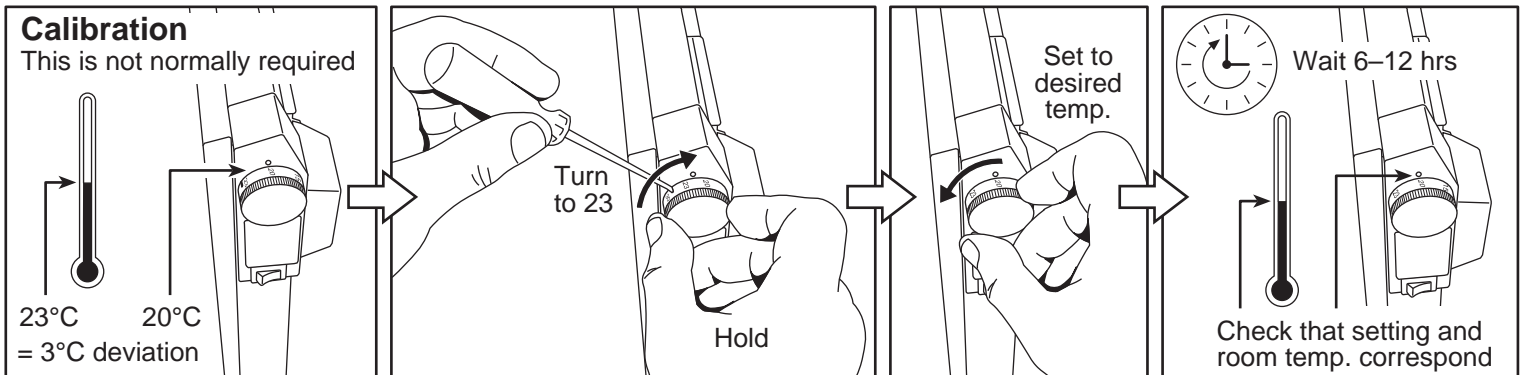
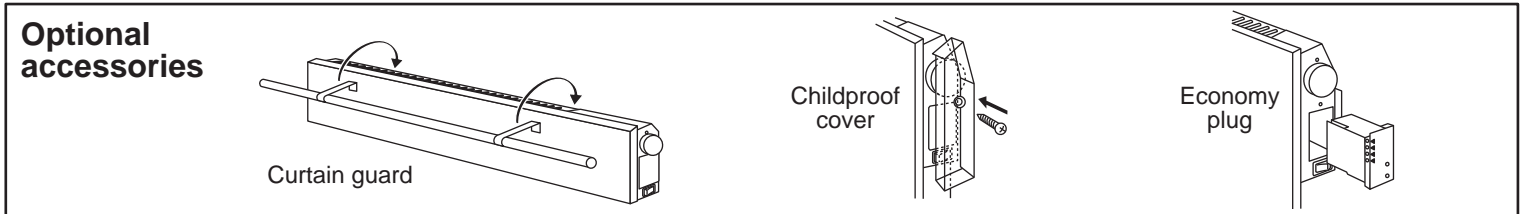
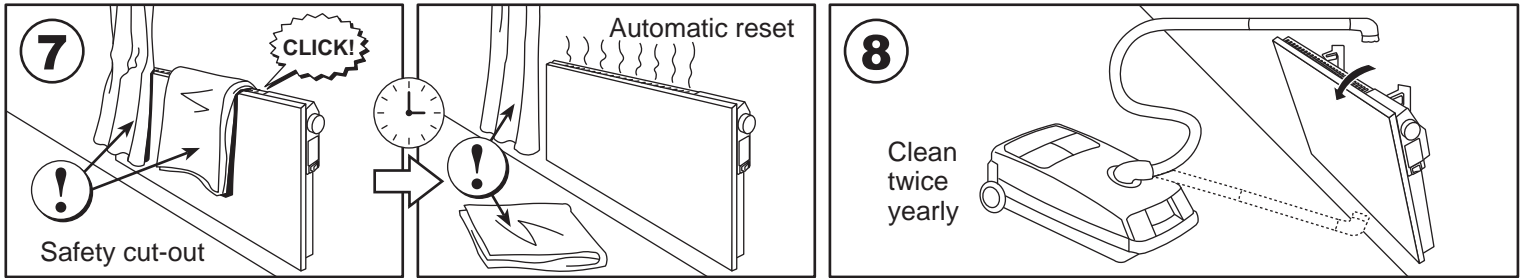
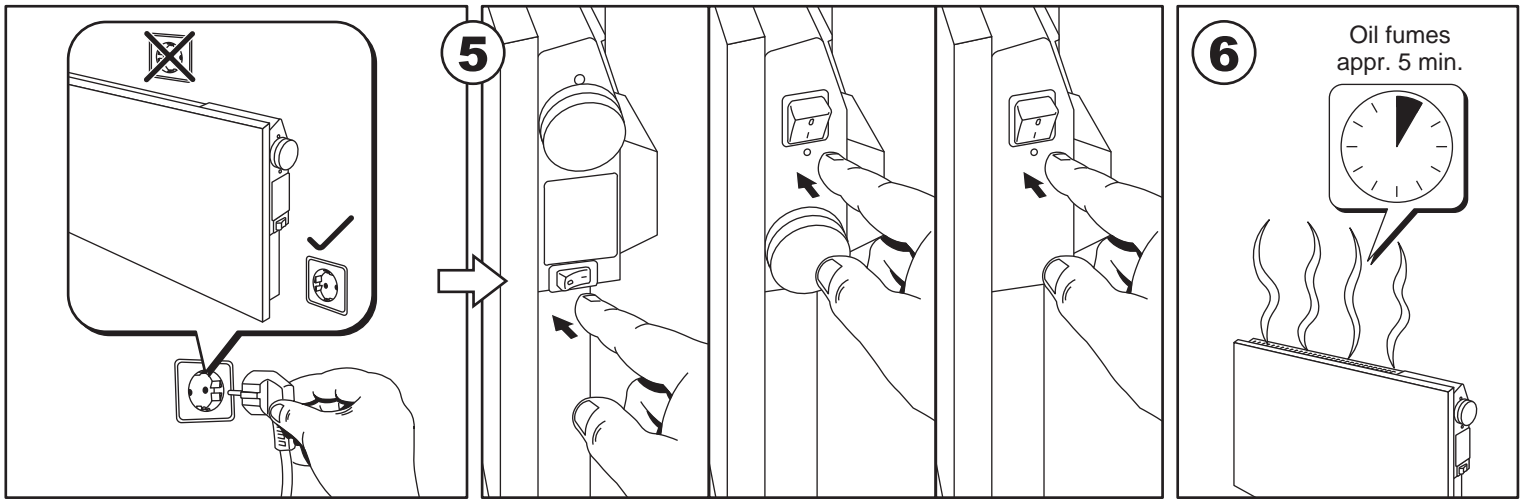
VP9	Watts	B	A	C	D
VP9 04	400	45	300	145	490
VP9 06	600	95	300	150	548
VP9 08	800	155	300	205	663
VP9 10	1000	200	300	215	720
VP9 12	1200	115	600	180	893
VP9 14	1400	170	600	235	1013
VP9 20	2000	340	600	410	1353



VL9	Watts	B	A	C	D
VL9 04	400	155	300	205	663
VL9 06	600	82	600	150	835
VL9 08	800	170	600	235	1008
VL9 10	1000	285	600	350	1238
VL9 12	1200	112	1200	155	1468
VL9 15	1500	580	1200	630	1813

All measurements in millimetres
 Note – wall bracket is not symmetrically positioned on heater





Vær oppmerksom på at ovnen ikke er beregnet for bruk av personer som har reduserte fysiske, motoriske eller psykiske evner. Produktet skal heller ikke brukes av personer uten erfaring eller kunnskap, med mindre de er gitt veiledning eller instruksjon om hvordan produktet skal betjenes på en sikker måte av en person som er ansvarlig for deres sikkerhet.

Barn må veiledes og være under oppsikt for å hindre at de ikke leker med produktet.

"The appliance is not intended for use by persons (including children) with reduced physical, sensory or mental capabilities, or lack of experience and knowledge, unless they have been given supervision or instruction concerning the use of the appliance by a person responsible for their safety"

Children should be supervised to ensure they do not play with the appliance

www.adax.no



Merk at symbolet betyr:
"Må ikke tildekkes".

Please note that this symbol means:
"Do not cover".