

We warm people  
through generations



DESIGNED FOR  
NORDIC CONDITIONS



QUALITY FOR  
70 YEARS



MARKET LEADER  
IN SCANDINAVIA

# We warm people through generations



Adax AS was founded in Svelvik, Norway, in 1948, and is the market leader in Scandinavia. We are pioneers within innovation and design, and were the first company in Scandinavia to introduce integrated WiFi and Bluetooth in our heaters. We're known for our timeless, Norwegian design, and make products to keep people warm for generations.



## Sustainability and the environment

We manufacture our products at our factory in Panevėžys, Lithuania, using 100% renewable energy. What's more, we are phasing-in more eco-friendly and recyclable packaging for all our products, certified according to the requirements of the Forest Stewardship Council (FSC).

Packaging certified by the FSC has to comply to ten principles. They are intended to ensure sustainable harvesting of forests, eco-friendly production and the protection of labour rights throughout the production process, according to international laws and regulations. That applies throughout the lifecycle of the packaging, and means the least possible impact on the environment. Learn more on FSC at [www.fsc.org](http://www.fsc.org).

## Warranty

We are confident that our products will provide heat for many years, and therefore provide a 5-year warranty on the products we make at our factories. Many of our products have replaceable thermostats, which can be easily replaced if a defect occur. That avoids having to replace the entire heater, and protects the environment.

# Easy connection with Bluetooth and Wi-Fi

Nowadays, we control much of our lives using our mobile phones. The Adax Wi-Fi app gives you full control, letting you change and check the temperature in your home and its various rooms quickly and easily.

## Main functions:

- Use the Adax Wi-Fi app to control multiple residences (your house, hut or holiday apartment etc.).
- Unlimited number of heaters and rooms in each home.
- Set up weekly programs to adjust the temperature at home according to your routines.
- Check your electricity consumption by location, room, week or month.
- Invite the family or friends to control your home or hut.
- Activate child lock to prevent children from manually adjusting heater temperature.
- Integration with Google Home – “Talk to your heaters” – increase or decrease the temperature or ask Google what the temperature is in a given room.

## Smart heating

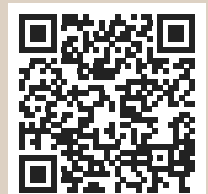
Using a weekly program, you can quickly set up routines for heating hour-by-hour or for the entire week. You choose the temperature for when you're at home, asleep or away.

We recommend using weekly programs to automatically adjust the temperature when you're sleeping or away. This will cut your electricity consumption and save you unnecessary expense.

Setting up your own weekly programs for each room at the temperature you want is simple. You can set different comfort and night temperatures for bedrooms and lounge. The comfort temperature in the lounge could be 22 degrees for instance, but 18 degrees in the bedroom. Using the “Away” holiday mode means you can reduce the temperature of all heaters in the house when away on holiday.



Download Adax WiFi from Google Play  
for Android or App Store for iPhone.



Check out our video for more info on the Adax WiFi app

# CLEA WI-FI

Exclusive panel heater  
with glass surface



Clea panel heater with Wi-Fi is our newest exclusive panel heater. With a tempered glass surface and mirror finish, it adds elegance to your interior.

- Connect easily to your Wi-Fi router at home, at the office, or at your cabin.
- Adjust temperature with the Adax Wi-Fi app or locally on the panel heater.
- Clea Wi-Fi is splashproof (IP24), double insulated and has overheating protection.
- Can also be delivered with DT thermostat.
- Tempered glass surface.
- Approved Ecodesign 2018.
- Double insulated (Cl.II).
- 5 years warranty.



**Clea Wi-Fi High: height 340 mm, depth 87 mm**

CLEA H KWT	Watt	Color	Lenght	Art.no. 230V
Clea H 04 KWT	400	White	606	810041
Clea H 06 KWT	600	White	676	810042
Clea H 08 KWT	800	White	790	810043
Clea H 10 KWT	1000	White	850	810044
Clea H 12 KWT	1200	White	1024	810045
Clea H 04 KWT	400	Black	606	810241
Clea H 06 KWT	600	Black	676	810242
Clea H 08 KWT	800	Black	790	810243
Clea H 10 KWT	1000	Black	850	810244
Clea H 12 KWT	1200	Black	1024	810245

**Clea Wi-Fi Low: height 222 mm, depth 87 mm**

CLEA L KWT	Watt	Color	Lenght	Art.no. 230V
Clea L 06 KWT	600	White	964	820042
Clea L 08 KWT	800	White	1144	820043
Clea L 10 KWT	1000	White	1368	820044
Clea L 06 KWT	600	Black	964	820242
Clea L 08 KWT	800	Black	1144	820243
Clea L 10 KWT	1000	Black	1368	820244

\* Installation box can be delivered. Art.no. 913875



See our video on how to mount our heaters to the wall



Connect.  
Adjust.  
Save.



WIFI THERMOSTAT



HARDENED GLASS SURFACE



5 YEARS WARRANTY



SPLASHPROOF (IP 24C)



DOUBLE INSULATED



OVERHEATING PROTECTION

# NEO WI-FI

Minimalistic panel heater developed from Scandinavia's bestselling design series

- Connect easily to your Wi-Fi router at home, at the office, or at your cabin.
- Adjust temperature with the Adax Wi-Fi app or locally on the panel heater.
- Neo Wi-Fi is splashproof (IP24), double insulated and has overheating protection.
- Can also be delivered with DT thermostat.
- Approved Ecodesign 2018.
- 5 years warranty.



Adax Neo panel heater with Wi-Fi is not just a heater, but also a part of your interior. Developed from Scandinavia's bestselling heater series, it is now delivered with an updated and minimalistic design.

Neo Wi-Fi High: height 330 mm, depth 87 mm

NEO H KWT	Watt	Color	Length	Art.no. 230V	EAN no.
Neo H 02 KWT	250	White	520	410040	7040664100404
Neo H 04 KWT	400	White	565	410041	7040664100411
Neo H 006 KWT	600	White	635	410042	7040664100428
Neo H 08 KWT	800	White	750	410043	7040664100435
Neo H 10 KWT	1000	White	809	410044	7040664100442
Neo H 12 KWT	1200	White	984	410045	7040664100459
Neo H 14 KWT	1400	White	1094	410046	7040664100466
Neo H 20 KWT	2000	White	1403	410048	7040664100480
Neo H 02 KWT	250	Pearl Black	520	410240	7040664102408
Neo H 04 KWT	400	Pearl Black	565	410241	7040664102415
Neo H 06 KWT	600	Pearl Black	635	410242	7040664102422
Neo H 08 KWT	800	Pearl Black	750	410243	7040664102439
Neo H 10 KWT	1000	Pearl Black	809	410244	7040664102446
Neo H 12 KWT	1200	Pearl Black	984	410245	7040664102453
Neo H 14 KWT	1400	Pearl Black	1094	410246	7040664102460
Neo H 20 KWT	2000	Pearl Black	1403	410248	7040664102484
Neo H 02 KWT	250	Sparkling Grey	520	410340	7040664103405
Neo H 04 KWT	400	Sparkling Grey	565	410341	7040664103412
Neo H 06 KWT	600	Sparkling Grey	635	410342	7040664103429
Neo H 08 KWT	800	Sparkling Grey	750	410343	7040664103436
Neo H 10 KWT	1000	Sparkling Grey	809	410344	7040664103443
Neo H 12 KWT	1200	Sparkling Grey	984	410345	7040664103450
Neo H 14 KWT	1400	Sparkling Grey	1094	410346	7040664103467
Neo H 20 KWT	2000	Sparkling Grey	1403	410348	7040664103481

Neo Wi-Fi Low: height 210 mm, depth 87 mm

NEO L KWT	Watt	Color	Length	Art.no. 230V	EAN no.
Neo L 02 KWT	250	White	655	420040	7040664200401
Neo L 04 KWT	400	White	783	420041	7040664200418
Neo L 06 KWT	600	White	1005	420042	7040664200425
Neo L 08 KWT	800	White	1186	420043	7040664200432
Neo L 10 KWT	1000	White	1380	420044	7040664200449
Neo L 12 KWT	1200	White	1548	420045	7040664200456
Neo L 14 KWT	1400	White	1760	420046	7040664200463
Neo L 02 KWT	250	Pearl Black	655	420240	7040664202405
Neo L 04 KWT	400	Pearl Black	783	420241	7040664202412
Neo L 06 KWT	600	Pearl Black	1005	420242	7040664202429
Neo L 08 KWT	800	Pearl Black	1186	420243	7040664202436
Neo L 10 KWT	1000	Pearl Black	1380	420244	7040664202443
Neo L 12 KWT	1200	Pearl Black	1548	420245	7040664202450
Neo L 14 KWT	1400	Pearl Black	1760	420246	7040664202467
Neo L 02 KWT	250	Sparkling Grey	655	420340	7040664203402
Neo L 04 KWT	400	Sparkling Grey	783	420341	7040664203419
Neo L 06 KWT	600	Sparkling Grey	1005	420342	7040664203426
Neo L 08 KWT	800	Sparkling Grey	1186	420343	7040664203433
Neo L 10 KWT	1000	Sparkling Grey	1380	420344	7040664203440
Neo L 12 KWT	1200	Sparkling Grey	1548	420345	7040664203457
Neo L 14 KWT	1400	Sparkling Grey	1760	420346	7040664203464

\* Installation box can be delivered. Art.no. 913875



Connect.  
Adjust.  
Save.



WIFI  
THERMOSTAT



5  
YEARS  
WARRANTY



SPLASHPROOF  
(IP 24C)



DOUBLE  
INSULATED



OVERHEATING  
PROTECTION

# NEO BASIC

Design panel heater  
with digital thermostat





Neo Basic is an design award-winning energy saver and has been the bestselling panel heater in Scandinavia since it was launched in 2007. The panel heater has a slim and timeless design that will fit in well with your home interior. Neo Basic is easy to mount, and has a reliable thermostat function with digital display. The thermostat also has a built-in day and night reduction function, to help reduce your electricity consumption.

- Easy adjustable and digital thermostat.
- Week program.
- Built-in day and night reduction function.
- IP20.
- Grounded product (Cl. I).
- Overheating protection.
- Cable length 1,3 m.
- Approved Ecodesign 2018.
- 5 year warranty.



**Neo Basic with digital thermostat. Height 370 mm, depth 90 mm**

NP KDT	Watt	Color	Lenght	Art.no. 230V
NP 04 KDT	400	White	474	650004
NP 06 KDT	600	White	589	650006
NP 08 KDT	800	White	704	650008
NP 10 KDT	1000	White	762	650010
NP 12 KDT	1200	White	934	650012
NP 14 KDT	1400	White	1042	650014
NP 20 KDT	2000	White	1394	650020

**Neo Basic with digital thermostat. Height 200 mm, depth 90 mm**

NL KDT	Watt	Color	Lenght	Art.no. 230V
NL 06 KDT	600	White	870	660006
NL 08 KDT	800	White	1050	660008
NL 10 KDT	1000	White	1280	660010
NL 12 KDT	1200	White	1450	660012

\*Neo Basic can also be delivered in the colors Black and Silver



See our video on how to mount our heaters to the wall



DIGITAL THERMOSTAT



WEEK PROGRAM



OPEN WINDOW DETECTION



5 YEARS WARRANTY



OVERHEATING PROTECTION

# ECO BASIC BT

Timeless and compact  
panel heater



# ECO BASIC BT

Panel heater with glass surface



### Eco Basic

A timeless, compact and economic panel heater for small rooms.

Reliable thermostat function and precise regulation make Eco Basic panel heater ideal for home and holiday cabin. With Bluetooth connection you can easily set your weekly schedules in the Adax app.

- Easy adjustable electronic thermostat - bluetooth compatible
- Overheating protection
- Splashproof (IP24) – The heater is approved for use in bathrooms if it is installed by a certified electrician.
- Double insulated (Cl. II) – requires no grounding.
- Cable length 1,3 m.
- 5 years warranty.



**NEW!**

NP KDT	Watt	Color	Lenght	Art.no. 230V	EAN no.
02 KBT	250	White	400	680060	7040666800609
04 KBT	400	White	472	680061	7040666800616
06 KBT	600	White	556	680062	7040666800623
08 KBT	800	White	674	680063	7040666800630
10 KBT	1000	White	714	680064	7040666800647
12 KBT	1200	White	894	680065	7040666800654
14 KBT	1400	White	1009	680066	7040666800661
20 KBT	2000	White	1374	680068	7040666800685



### Eco Basic with glass surface.

An elegant, compact and economic panel heater for small rooms.

Reliable thermostat function and precise regulation make Eco Basic glass heater ideal for home and holiday cabin.

- Easy adjustable electronic thermostat - bluetooth compatible
- Tempered glass surface.
- Overheating protection.
- Splashproof (IP24) – The heater is approved for use in bathrooms if it is installed by a certified electrician.
- Double insulated (Cl. II) – requires no grounding.
- Cable length 1,3 m.
- 5 years warranty.



#### Eco Basic panel heater with glass surface. Height 328 mm

Eco Basic	Watt	Color	Lenght	Art.no. 230V	EAN no.
02 KBT	250	White	400	810060	7040668100608

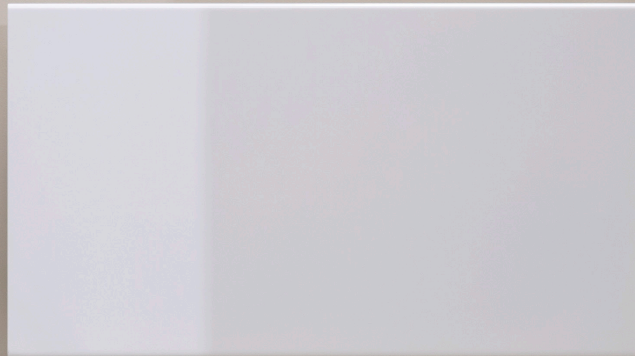


See our video on how to mount our heaters to the wall



# NEO COMPACT

Compact panel heater with Wi-Fi



The Neo Compact is a compact version of one of our best-sellers. It comes in six wattage sizes, from 500 up to 2500W, and as a panel (height: 420 mm).

It has a timeless and functional design that fits into any room in the home. You can choose between two colours, white or Sparkling Grey. Neo Compact comes standard with a Wi-Fi thermostat (WT) which can be controlled with the Adax Wi-Fi app.

- Wi-Fi thermostat.
- Produced using 100% sustainable electricity.
- Stylish, classic panel heater.
- White or Sparkling Grey.
- Connect easily to your Wi-Fi router at home, at the office, or at your cabin.
- Adjust temperature with the Adax Wi-Fi app or locally on the panel heater
- Neo Compact is splashproof (IP24), double insulated and has overheating protection.
- Approved according to the Ecodesign 2018 regulations.
- 5 years warranty.

Neo Compact: Height 420 mm, depth 87 mm

Neo Compact	Watt	Color	Lenght	Art.no. 230V	EAN no.
NC 05 KWT	500	White	430	610040	7040666100402
NC 075 KWT	750	White	510	610046	7040666100464
NC 10 KWT	1000	White	555	610044	7040666100440
NC 15 KWT	1500	White	755	610047	7040666100471
NC 20 KWT	2000	White	955	610048	7040666100488
NC 25 KWT	2500	White	1170	610049	7040666100495
NC 05 KWT	500	Sparkling Grey	430	610340	7040666103403
NC 075 KWT	750	Sparkling Grey	510	610346	7040666103465
NC 10 KWT	1000	Sparkling Grey	555	610344	7040666103441
NC 15 KWT	1500	Sparkling Grey	755	610347	7040666103472
NC 20 KWT	2000	Sparkling Grey	955	610348	7040666103489
NC 25 KWT	2500	Sparkling Grey	1170	610349	7040666103496



5  
YEARS  
WARRANTY



SPLASHPROOF  
(IP 24C)



DOUBLE  
INSULATED



OVERHEATING  
PROTECTION



WIFI  
THERMOSTAT

# VP12

## Panel heater with electronic thermostat



The VP12 is a compact version of one of our best-sellers and comes with an accurate electronic thermostat that is bluetooth compatible. VP12 has a timeless and functional design that fits into any room in the home.

It is available in five wattage sizes, from 500 up to 2500W, and as a panel (height: 420 mm). The electronic thermostat is easy to adjust and has an accuracy of 0,5°C. VP12 is approved according to the Ecodesign 2018 regulations.



**NEW!**

- Produced using 100% sustainable electricity.
- Stylish, compact panel heater.
- Bluetooth compatible
- Accurate electronic thermostat.
- VP12 is splashproof (IP24) and is double insulated (C.I.II).
- Overheating protection.
- 5 years warranty.

**VP12: Height 420 mm, depth 87 mm**

VP12	Watt	Color	Lenght	Art.no. 230V	EAN no.
VP12 H 05 KBT	500	White	430	610060	7040666100600
VP12 H 10 KBT	1000	White	555	610064	7040666100648
VP12 H 15 KBT	1500	White	755	610067	7040666100679
VP12 H 20 KBT	2000	White	955	610068	7040666100686
VP12 H 25 KBT	2500	White	1170	610069	7040666100693



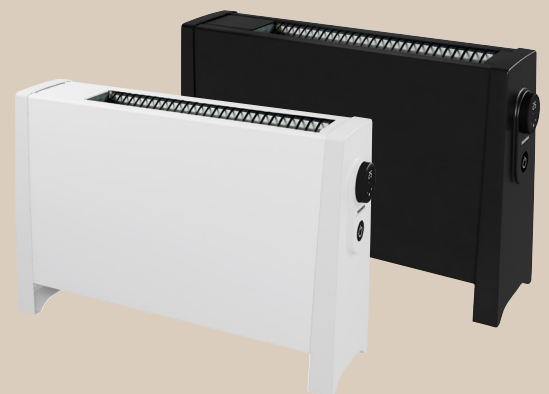
# VILJE Wi-Fi

Compact convector with timeless design



Vilje VG11 is a compact convector with a Norwegian timeless design. It is easy to move around to places you may need some extra heating. The heater has a digital display which makes it easy to adjust the temperature and power. Vilje is available in the colors white and matt black. You can choose between a digital thermostat (DT) or a thermostat with integrated WiFi/Bluetooth (WT) connectivity.

**NEW!**



- Digital display.
- Fan (Only for DT).
- Tip-over protection.
- Overheating protection.
- Heat shield floor protection (for hardwood/parquet flooring).
- Three step switch 800/1200/2000W (only for DT).
- WiFi/Bluetooth (WT) is compatible to Google Home, Amazon Alexa and more.
- Available in white and matt black.
- 5 year warranty.

**Vilje VG11 DT**

Product	Watt	Color	Dimensions (LxHxD)	Art.no. 230V	EAN no.	El.no.
VG11 20DTFW	2000	White	512x340x150mm	515038	7040665150385	60663137
VG11 20DTFB	2000	Black	512x340x150mm	515238	7040665152389	60663138

**Vilje VG11 WiFi**

Product	Watt	Color	Dimensions (LxHxD)	Art.no. 230V	EAN no.	El.no.
VG11 20WTW	2000	White	512x340x150mm	510048	7040665152389	60663139
VG11 20WTB	2000	Black	512x340x150mm	510248	7040665102483	60663140

# ENA

## Digital fan heater



The digital fan heater Ena has a timeless design and one of the most silent fans on the market making it the perfect choice for efficient heating of a designated area. Available in white and matt black designs.

- Silent fan.
- Digital display.
- Very accurate digital thermostat (tolerance +/- 0,5 degrees).
- Three wattage settings (800W/1200W/2000W).
- Tip-over fail safe.
- Overheating fail safe.
- Environmentally sustainable and recyclable packaging.
- Made with 100% renewable electricity.
- 5 Year Warranty.



### Ena VV11

Product	Watt	Color	Dimensions (LxHxD)	Art.no. 230V	EAN no.	El.no.
VV11 20DTFW	2000	White	330x245x135mm	555038	7040665550383	65550383
VV11 20DTFB	2000	Black	330x245x135mm	555238	7040665502382	65550383

# Freestanding radiators

- Fast, efficient heating in a small area.
- Move to where you need heat most.
- Simple controls.

## Basic Oil-filled Floor radiator

Oil-filled radiator for harsh winter climates. Stepless thermostat. Double thermal fuse and tip over protection

**Basic Oil-filled Floor heater**

Product	Watt	Color	Art.no.	EAN no.
Basic 10	1000	White	504410	7040665044103
Basic 15	1500	White	504415	7040665044158
Basic 20	2000	White	504420	7040665044202



## VG5 Basic Floor heater

Elegant, compact design. Overheating protection. Some models also feature a fan.

**VG5 Basic Floor heater**

Product	Watt	Color	Length	Art.no.	EAN no.
VG515 T	1500	White	510	505150	7040665051507
VG520 T	2000	White	510	505250	7040665052504
VG520 T w/fan	2000	White	510	505200	7040665052009

## VV9 Basic Fan heater

Fast, efficient heating where you need it. Overheating protection. 3-step power adjustment. 800/1200/2000 W. Silent fan.



Art.no. 555010  
EAN no. 7040665550109



# Drying products

- Our drying products give fast, efficient drying for all kinds of footwear, mittens, hats, etc.
- The shoe driers have a timer to ensure the appliance switches off after use.
- The drying shelf can be folded up against the wall when not in use.



## Basic Drying Shelf

Practical and efficient drying shelf.

### Basic Drying Shelf

Product	Watt	Color	Lenght	Art.no.	EAN no.
TKH 208	80	White	870	230510	7040662305108
TKH 211	110	White	1170	230515	7040662305153

## Basic Shoe Dryer

Shoe dryer with 180 min. timer  
290 W.

Art. no. 238010  
EAN no. 7040662380105



**NEW!**

## Neo Shoe Dryer

Stylish shoe dryer with digital display and 180 min. timer.  
220 W.

ST3D White  
Art. no. 238110  
EAN nr. 7040662381102

ST3D Black  
Art. no. 238120  
EAN no. 7040662381201



# Smart Plug

Smart Plug WT2 is the compact, smart and practical WiFi-controlled plug. It allows you to remote control all your home's electrical appliances via the Adax WiFi app – either in your home or hut. Simple connection means you can start using it quickly. Smart Plug can either be used for switching on/off or as a thermostat for smarter control of older heaters.



## The app does the work!

The Adax WiFi app lets you control all electrical appliances, whether heaters, coffee machine or lights. You can also use the timer settings and programs to operate various appliances according to your needs. What's more, the timer function can be used to improve security, by switching different lights on and off. Smart Plug WT2 makes life simple, practical, and most of all, secure.

## Energy metering

Use the Adax WiFi app to gain full control of your energy consumption for the Smart Plug WT2.

## Remote control means more control

No need to buy a new heater to benefit from the Smart Plug WT2. The plug has its own built-in thermostat, transforming old heaters into new, smart models. The built-in thermostat monitors the room temperature, and keeps it at the set level. You can also set up weekly programs, and turn-down the temperature when not at home.

## Smart home

Smart Plug WT2 is compatible with Google Home and Homey amongst others.

Art. nr. 900001  
EAN nr. 7040669000013



Check out our video for more info on the Adax WiFi app



# GVR/VR Radiant heater

Our radiant heaters with radiated heat provide fast, comfortable heating.

Splashproof, and wetroom-approved (IP44). Height 100 mm, depth 132 mm.



Product	Watt	Lenght	Art.no.	EAN no.	Functions
GVR 505 B	500 W	440	591210	7040665912105	Fixed installation with stepper switch
GVR 507 B	750 W	605	592210	7040665922104	Fixed installation with stepper switch
GVR 510 B	1000 W	740	593210	7040665932103	Fixed installation with stepper switch
GVR 505	500 W	440	591010	7040665910101	Fixed installation
GVR 507	750 W	605	592010	7040665920100	Fixed installation
GVR 510	1000 W	740	593010	7040665930109	Fixed installation
VR505 KB	500 W	440	591510	7040665915106	Cable and plug with stepper switch
VR507 KB	750 W	605	592510	7040665925105	Cable and plug with stepper switch
VR510 KB	1000 W	740	593510	7040665935104	Cable and plug with stepper switch

## Accessories

### WT2 – WiFi and Bluetooth thermostat

For Neo, Clea, Famn and Iver  
Art. no. White: 910001  
EAN no. 7040669100010  
Art. no. Black: 910002  
EAN no. 7040669100027

### DT – Digital thermostat with turn-down programme

For Neo, Clea, Famn and Iver  
Art. no. White: 910011  
EAN nr. 7040669100119  
Art. no. Black: 910016  
EAN no. 7040669100164

### SLX – Slave thermostat

For Neo, Clea, Famn and Iver  
Art. no. White: 910017  
EAN no. 7040669100171  
Art. no. Black: 910018  
EAN no. 7040669100188



### Coupling box for fixed installation Cl. I

For Neo Basic  
Art. no. 913070  
EAN no. 7040669138709

### Coupling box for fixed installation Cl. I

For Neo, Clea, Famn, Iver and Eco Basic  
Art. no. 913875  
EAN no. 7040669138754



### Floor stand, high white

For Neo H, Clea H, Famn H, Iver H, Neo Basic NP and Eco Basic  
Art. no. 914020  
EAN no. 7040669140207

### Floor stand, high black

For Neo H, Clea H, Famn H, Iver H, Neo Basic NP and Eco Basic  
Art. no. 914220  
EAN no. 7040669142201

### Floor stand, low white

For Neo L, Clea L, Famn L, Iver L and Neo Basic NL  
Art. no. 914021  
EAN no. 7040669140214

### Floor stand, low black

For Neo L, Clea L, Famn L, Iver L and Neo Basic NL  
Art. no. 914221  
EAN nr. 7040669142218



### Extra cable, white

For Neo, Clea, Famn and Iver  
Art. no. 1,3m: 913960  
EAN no. 7040669139607  
Art. no. 1,9m: 913961  
EAN no. 7040669139614

### Extra cable, black

For Neo, Clea, Famn and Iver  
Art. no. 1,3m: 913962  
EAN no. 7040669139621  
Art. no. 1,9m: 913963  
EAN no. 7040669139638



Connect. Adjust. Save.



**ADAX**

ADAX AS  
Myhresgt. 1. PO. Box 38  
N-3061 Svelvik  
Norway  
E-mail: [info@adax.no](mailto:info@adax.no)

[www.adax.no](http://www.adax.no)



Follow Adax on Facebook or Instagram  
[@adaxheating](https://www.instagram.com/adaxheating)